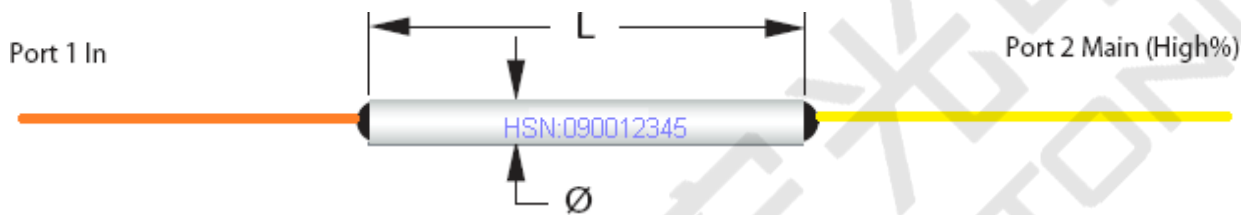


MultiMode to Single Mode Fiber Coupler (850nm TO 1310 AND 1550 NM)

Product Description

The HiPhotonics fused MM/SM Fiber coupler allows the signal from a regular Multimode fiber to be coupled efficiently with Single mode fiber with minimal losses of the original signal



Performance Specification

MSWFC Series	Specifications	Unit
Wavelength Range	1310/1550	nm
Fiber Type	Corning SMF-28 Corning MSD-28-50-62.5	dB
Transmission MM to SM	>70%(<3.0dB)	dB
Transmission SM to MM	0.3	dB
PDL (Max)	Signal Path:<0.10dB, Tap path:<0.15dB	dB
Back Reflection Losses	>20	dB
Operating Temperature Range	-40 ~ +75	°C
Storage Temperature Range	-40 ~ + 85	°C
Package Dimensions	250um bare fiber Ø 3.0X 45	
Qualifications	Telcordia GR-1221	

Features:

- Wavelength Independent
- Low Insertion Loss and PDL
- Transmission Efficiency of over 70%

Applications:

- Network Monitoring
- Local Area Networks
- Testing Instruments

1. Insertion loss over operating wavelength range at ~23°C (excluding PDL and TDL).
2. Insertion loss change over the all input polarization states.

Order Information MSWFC-①-②-③-④-⑤-⑥-⑦

①Operating Wavelength 13=1310nm 15=1550nm	②Fiber Length A=0.5 Meter B=1 Meter S=Special	③Fiber Type 50=50/125 62=62.5/125	④Connector Type 0=None 1=FC/UPC S=Special	⑤Packaging A=P1+250um bare fiber B=P2+900um loose tube C=P3+3mm cable
---	--	---	--	--